

Datasheet for ABIN2776021
anti-TCF7 antibody (Middle Region)



[Go to Product page](#)

3 Images

Overview

Quantity:	100 µL
Target:	TCF7
Binding Specificity:	Middle Region
Reactivity:	Human, Mouse, Rat, Cow, Dog, Guinea Pig, Horse, Rabbit, Saccharomyces cerevisiae
Host:	Rabbit
Clonality:	Polyclonal
Conjugate:	This TCF7 antibody is un-conjugated
Application:	Western Blotting (WB), Immunohistochemistry (IHC)

Product Details

Immunogen:	The immunogen is a synthetic peptide directed towards the middle region of human TCF7
Sequence:	PAAIPHPAIV PPSGKQELQP FDRNLKTQAE SKAEKEAKKP TIKKPLNAFM
Predicted Reactivity:	Cow: 86%, Dog: 93%, Guinea Pig: 100%, Horse: 100%, Human: 100%, Mouse: 93%, Rabbit: 86%, Rat: 100%, Yeast: 81%
Characteristics:	This is a rabbit polyclonal antibody against TCF7. It was validated on Western Blot and immunohistochemistry.
Purification:	Affinity Purified

Target Details

Target:	TCF7
---------	------

Target Details

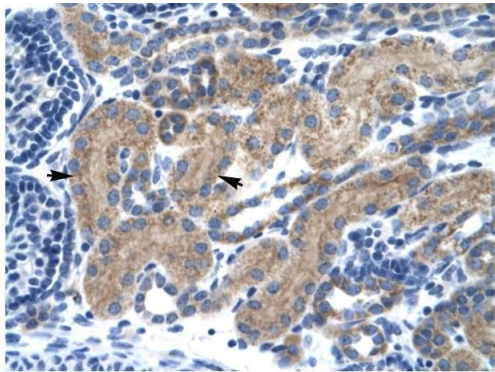
Alternative Name:	TCF7 (TCF7 Products)
Background:	<p>The T-cell-specific transcription factor TCF7 activates genes involved in immune regulation and is a candidate locus for genetic susceptibility to type 1 diabetes.</p> <p>Alias Symbols: TCF-1</p> <p>Protein Interaction Partner: UBC, SS18L1, DAZAP2,</p> <p>Protein Size: 384</p>
Molecular Weight:	42 kDa
Gene ID:	6932
NCBI Accession:	NM_003202 , NP_003193
UniProt:	Q86WR9
Pathways:	WNT Signaling

Application Details

Application Notes:	Optimal working dilutions should be determined experimentally by the investigator.
Comment:	Antigen size: 384 AA
Restrictions:	For Research Use only

Handling

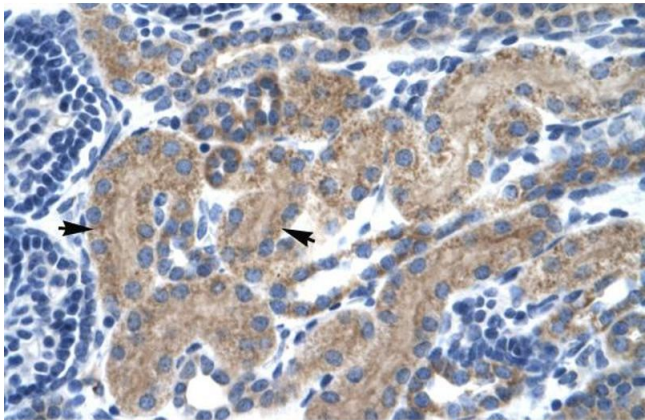
Format:	Liquid
Concentration:	Lot specific
Buffer:	Liquid. Purified antibody supplied in 1x PBS buffer with 0.09 % (w/v) sodium azide and 2 % sucrose.
Preservative:	Sodium azide
Precaution of Use:	This product contains Sodium azide: a POISONOUS AND HAZARDOUS SUBSTANCE which should be handled by trained staff only.
Handling Advice:	Avoid repeated freeze-thaw cycles.
Storage:	-20 °C
Storage Comment:	For short term use, store at 2-8°C up to 1 week. For long term storage, store at -20°C in small aliquots to prevent freeze-thaw cycles.



Rabbit Anti-TCF7 Antibody
Catalog Number: ARP34782
Lot Number: QC4283
Paraffin Embedded Tissue: Human Kidney
Cells with Positive label: Epithelial cells of renal tubule (Indicated with Arrows)
Antibody Concentration: 4.0-8.0 µg/ml
Magnification: 400X

Immunohistochemistry

Image 1. Human kidney



Immunohistochemistry

Image 2. Human kidney



Western Blotting

Image 3. WB Suggested Anti-TCF7 Antibody Titration:
0.125ug/ml ELISA Titer: 1:62500 Positive Control: Human Thymus