

Datasheet for ABIN2782417

anti-Lipase I antibody (Middle Region)[Go to Product page](#)**1** Image

Overview

Quantity:	100 µL
Target:	Lipase I (LIPI)
Binding Specificity:	Middle Region
Reactivity:	Human, Rabbit, Pig
Host:	Rabbit
Clonality:	Polyclonal
Conjugate:	This Lipase I antibody is un-conjugated
Application:	Western Blotting (WB)

Product Details

Immunogen:	The immunogen is a synthetic peptide directed towards the middle region of human LIPI
Sequence:	YFVLSIIVPD KTMMDGSFSF KLLNQLGMIE EPRLYEKNKP FYKLQEVKIL
Predicted Reactivity:	Human: 100%, Pig: 93%, Rabbit: 86%
Characteristics:	This is a rabbit polyclonal antibody against LIPI. It was validated on Western Blot using a cell lysate as a positive control.
Purification:	Affinity Purified

Target Details

Target:	Lipase I (LIPI)
Alternative Name:	LIPI (LIPI Products)

Target Details

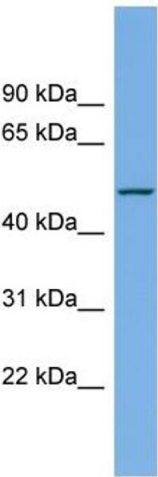
Background:	<p>The protein encoded by this gene is a phospholipase that hydrolyzes phosphatidic acid to produce lysophosphatidic acid. The encoded protein, which can be inhibited by sodium vanadate, may be found exclusively in sperm. Defects in this gene are a cause of susceptibility to familial hypertriglyceridemia.</p> <p>Alias Symbols: LPDL, PRED5, CT17</p> <p>Protein Size: 481</p>
Molecular Weight:	55 kDa
Gene ID:	149998
NCBI Accession:	NM_198996 , NP_945347

Application Details

Application Notes:	Optimal working dilutions should be determined experimentally by the investigator.
Comment:	Antigen size: 481 AA
Restrictions:	For Research Use only

Handling

Format:	Liquid
Concentration:	Lot specific
Buffer:	Liquid. Purified antibody supplied in 1x PBS buffer with 0.09 % (w/v) sodium azide and 2 % sucrose.
Preservative:	Sodium azide
Precaution of Use:	This product contains Sodium azide: a POISONOUS AND HAZARDOUS SUBSTANCE which should be handled by trained staff only.
Handling Advice:	Avoid repeated freeze-thaw cycles.
Storage:	-20 °C
Storage Comment:	For short term use, store at 2-8°C up to 1 week. For long term storage, store at -20°C in small aliquots to prevent freeze-thaw cycles.



Western Blotting

Image 1. WB Suggested Anti-LIPI Antibody Titration: 0.2-1 ug/ml Positive Control: NCI-H226 cell lysate