

Datasheet for ABIN2854806
anti-MAPK8IP1 antibody



[Go to Product page](#)

3 Images

Overview

| | |
|--------------|--|
| Quantity: | 100 µL |
| Target: | MAPK8IP1 |
| Reactivity: | Human |
| Host: | Rabbit |
| Clonality: | Polyclonal |
| Conjugate: | This MAPK8IP1 antibody is un-conjugated |
| Application: | Western Blotting (WB), Immunohistochemistry (Paraffin-embedded Sections) (IHC (p)) |

Product Details

| | |
|-------------------|--|
| Immunogen: | Recombinant protein encompassing a sequence within the center region of human JIP1. The exact sequence is proprietary. |
| Isotype: | IgG |
| Cross-Reactivity: | Human, Mouse |
| Characteristics: | Rabbit Polyclonal antibody to JIP1 (mitogen-activated protein kinase 8 interacting protein 1) JIP1 antibody |
| Purification: | Purified by antigen-affinity chromatography. |

Target Details

| | |
|-------------------|--|
| Target: | MAPK8IP1 |
| Alternative Name: | mitogen-activated protein kinase 8 interacting protein 1 (MAPK8IP1 Products) |

Target Details

| | |
|-------------|---|
| Background: | <p>The protein encoded by this gene is a regulator of the pancreatic beta-cell function. It is highly similar to JIP-1, a mouse protein known to be a regulator of c-Jun amino-terminal kinase (Mapk8). This protein has been shown to prevent MAPK8 mediated activation of transcription factors, and decrease IL-1 beta and MAP kinase kinase 1 (MEKK1) induced apoptosis in pancreatic beta cells. This protein also functions as a DNA-binding transactivator of the glucose transporter GLUT2. RE1-silencing transcription factor (REST) is reported to repress the expression of this gene in insulin-secreting beta cells. This gene is found to be mutated in a type 2 diabetes family, and thus is thought to be a susceptibility gene for type 2 diabetes.</p> <p>Cellular Localization: Cytoplasm (By similarity) , Cytoplasm , perinuclear region (By similarity) , Nucleus (By similarity)</p> |
|-------------|---|

| | |
|-------------------|--------|
| Molecular Weight: | 78 kDa |
|-------------------|--------|

| | |
|----------|------|
| Gene ID: | 9479 |
|----------|------|

| | |
|----------|------------------------|
| UniProt: | Q9UQF2 |
|----------|------------------------|

Application Details

| | |
|--------------------|---|
| Application Notes: | WB: 1:500-1:3000. IHC-P: 1:100-1:1000. Optimal dilutions/concentrations should be determined by the researcher. Not tested in other applications. |
|--------------------|---|

| | |
|----------|-------------------------|
| Comment: | Positive Control: HepG2 |
|----------|-------------------------|

| | |
|---------------|-----------------------|
| Restrictions: | For Research Use only |
|---------------|-----------------------|

Handling

| | |
|---------|--------|
| Format: | Liquid |
|---------|--------|

| | |
|----------------|---------|
| Concentration: | 1 mg/mL |
|----------------|---------|

| | |
|---------|---|
| Buffer: | 0.1M Tris-Glycine (pH 7), 10 % Glycerol, 0.01 % Thimerosal |
|---------|---|

| | |
|---------------|--------------------------|
| Preservative: | Thimerosal (Merthiolate) |
|---------------|--------------------------|

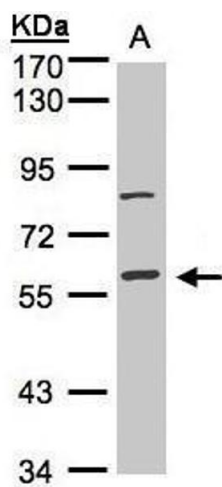
| | |
|--------------------|--|
| Precaution of Use: | This product contains Thimerosal (Merthiolate): a POISONOUS AND HAZARDOUS SUBSTANCE which should be handled by trained staff only. |
|--------------------|--|

| | |
|----------|-------------|
| Storage: | 4 °C,-20 °C |
|----------|-------------|

| | |
|------------------|---|
| Storage Comment: | Store as concentrated solution. Centrifuge briefly prior to opening vial. For short-term storage (1-2 weeks), store at 4°C. For long-term storage, aliquot and store at -20°C or below. Avoid |
|------------------|---|

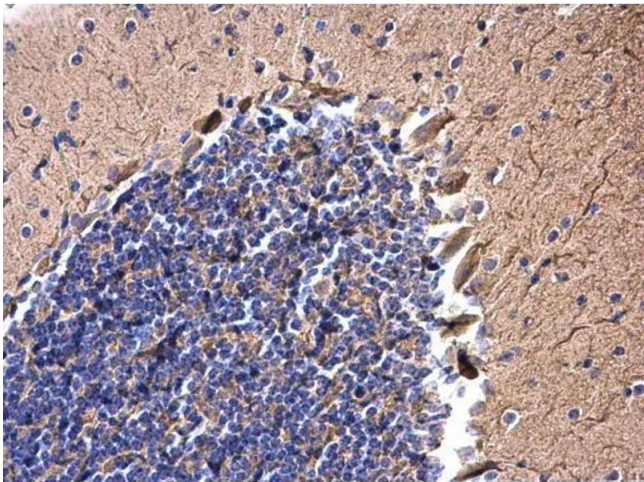
multiple freeze-thaw cycles.

Images



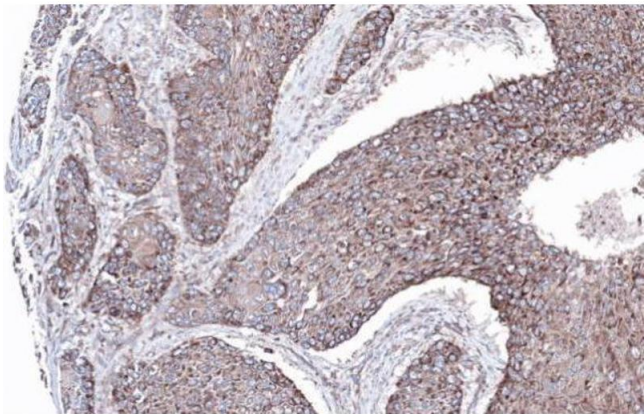
Western Blotting

Image 1. WB Image Sample(30 ug whole cell lysate) A:Hep G2 , 7.5% SDS PAGE antibody diluted at 1:1000



Immunohistochemistry

Image 2. IHC-P Image JIP1 antibody detects JIP1 protein at cytoplasm on mouse brain by immunohistochemical analysis. Sample: Paraffin-embedded mouse brain. JIP1 antibody , diluted at 1:500.



Immunohistochemistry

Image 3. IHC-P Image Immunohistochemical analysis of paraffin-embedded lung SCC xenograft, using MAPK8IP1, antibody at 1:100 dilution.