

Datasheet for ABIN351497  
**anti-Cathepsin L2 antibody**



[Go to Product page](#)

2 Images

## Overview

Quantity:	50 µg
Target:	Cathepsin L2 (CTSL2)
Reactivity:	Human
Host:	Mouse
Clonality:	Monoclonal
Conjugate:	This Cathepsin L2 antibody is un-conjugated
Application:	Western Blotting (WB), Immunohistochemistry (IHC), Immunohistochemistry (Paraffin-embedded Sections) (IHC (p))

## Product Details

Brand:	IHC-plus™
Immunogen:	Synthetic peptide surrounding amino acid 21 of human cathepsin V.  Type of Immunogen: Synthetic peptide
Clone:	BV55-1
Isotype:	IgG1
Specificity:	The anti-Cathepsin V antibody recognizes human cathepsin V and procathepsin V. It does not cross-react with other cathepsins
Purification:	Protein G purified

## Target Details

Target:	Cathepsin L2 (CTSL2)
Alternative Name:	CTSV / Cathepsin V ( <a href="#">CTSL2 Products</a> )
Background:	Name/Gene ID: CTSV Subfamily: Cysteine C1 Family: Protease  Synonyms: CTSV, Cathepsin L2, Cathepsin L2, preproprotein, Cathepsin V, Cathepsin U, CTSU, CATL2, CTSL2
Gene ID:	1515
UniProt:	<a href="#">O60911</a>
Pathways:	<a href="#">Toll-Like Receptors Cascades</a>

## Application Details

Application Notes:	Approved: IHC, IHC-P (10 µg/mL), WB (1 - 4 µg/mL)  Usage: Immunohistochemistry: This antibody was validated for use in immunohistochemistry on a panel of 21 formalin-fixed, paraffin-embedded (FFPE) human tissues after heat induced antigen retrieval in pH 6.0 citrate buffer. After incubation with the primary antibody, slides were incubated with biotinylated secondary antibody, followed by alkaline phosphatase-streptavidin and chromogen. The stained slides were evaluated by a pathologist to confirm staining specificity. The optimal working concentration for this antibody was determined to be 10 µg/mL.
Comment:	Target Species of Antibody: Human
Restrictions:	For Research Use only

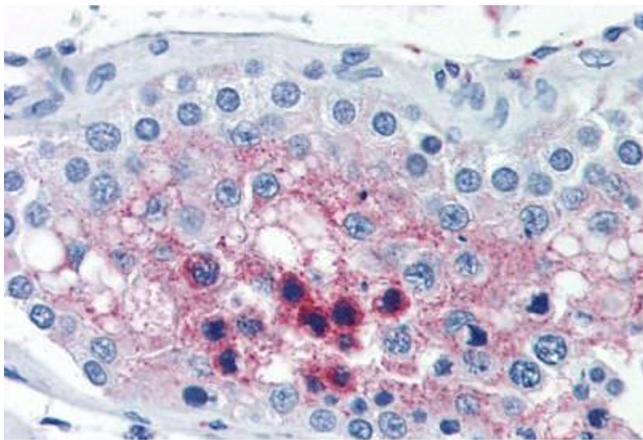
## Handling

Format:	Liquid
Concentration:	Lot specific
Buffer:	PBS, 30 % glycerol, 0.5 % BSA, 0.01 % Thimerosal. Sourced in Ascites.
Preservative:	Thimerosal (Merthiolate)
Precaution of Use:	This product contains Thimerosal (Merthiolate): a POISONOUS AND HAZARDOUS SUBSTANCE

Handling

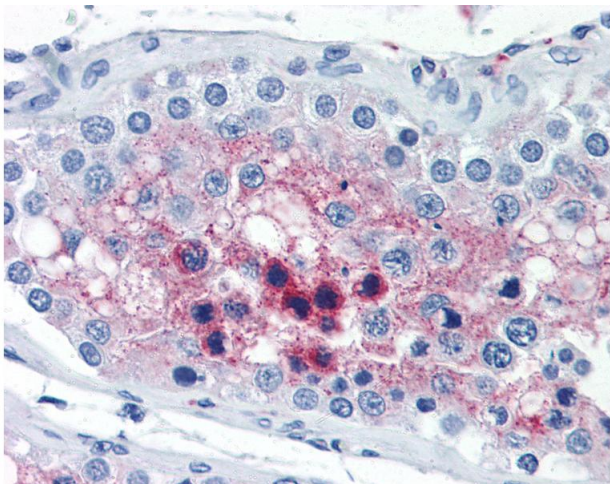
	which should be handled by trained staff only.
Handling Advice:	Avoid repeated freezing and thawing.
Storage:	-20 °C,-80 °C
Storage Comment:	Short term: -20°C Long term: -70°C Avoid freeze-thaw cycles.

Images



Immunohistochemistry (Paraffin-embedded Sections)

**Image 1.** Human Testis (formalin-fixed, paraffin-embedded) stained with CTSL2 antibody ABIN351497 at 10 ug/ml followed by biotinylated anti-mouse IgG secondary antibody ABIN481714, alkaline phosphatase-streptavidin and chromogen.



Immunohistochemistry

**Image 2.** Anti-CTSL2 / Cathepsin V antibody IHC of human testis. Immunohistochemistry of formalin-fixed, paraffin-embedded tissue after heat-induced antigen retrieval. Antibody concentration 10 ug/ml.