

Datasheet for ABIN453423

## anti-TMPRSS2 antibody (Middle Region)



[Go to Product page](#)

### 1 Image

#### Overview

Quantity:	0.4 mL
Target:	TMPRSS2
Binding Specificity:	Middle Region
Reactivity:	Human
Host:	Rabbit
Clonality:	Polyclonal
Conjugate:	This TMPRSS2 antibody is un-conjugated
Application:	Western Blotting (WB), Enzyme Immunoassay (EIA)

#### Product Details

Immunogen:	KLH conjugated synthetic peptide selected from the Center region of human TMPRSS2
Specificity:	This antibody reacts to TMPRSS2.
Purification:	Saturated Ammonium Sulfate (SAS) precipitation

#### Target Details

Target:	TMPRSS2
Alternative Name:	TMPRSS2 ( <a href="#">TMPRSS2 Products</a> )
Background:	TMPRSS2 is a protein that belongs to the serine protease family. The protein contains a type II transmembrane domain, a receptor class A domain, a scavenger receptor cysteine-rich domain and a protease domain. Serine proteases are known to be involved in many physiological and pathological processes. Its gene was demonstrated to be up-regulated by androgenic

## Target Details

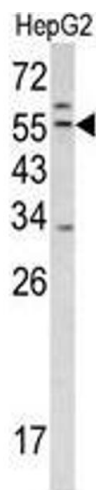
	hormones in prostate cancer cells and down-regulated in androgen-independent prostate cancer tissue. The protease domain of this protein is thought to be cleaved and secreted into cell media after autocleavage.Synonyms: PRSS10, Serine protease 10, Transmembrane protease serine 2
Gene ID:	7113
NCBI Accession:	<a href="#">NP_005647</a>
UniProt:	<a href="#">O15393</a>
Pathways:	<a href="#">SARS-CoV-2 Protein Interactome</a>

## Application Details

Application Notes:	ELISA: 1/1,000. Western blotting: 1/50 - 1/100. Other applications not tested. Optimal dilutions are dependent on conditions and should be determined by the user.
Restrictions:	For Research Use only

## Handling

Format:	Liquid
Concentration:	0.25 mg/mL
Buffer:	PBS with 0.09 % (W/V) sodium azide
Preservative:	Sodium azide
Precaution of Use:	This product contains sodium azide: a POISONOUS AND HAZARDOUS SUBSTANCE which should be handled by trained staff only.
Handling Advice:	Avoid repeated freezing and thawing.
Storage:	4 °C/-20 °C
Storage Comment:	Store the antibody undiluted at 2-8 °C for one month or (in aliquots) at -20 °C for longer.



Western Blotting

**Image 1.** Western blot analysis of TMPRSS2 antibody (Center) in HepG2 cell line lysates (35ug/lane). TMPRSS2 (arrow) was detected using the purified Pab.