

Datasheet for ABIN570889

anti-LIMS2 antibody (Internal Region)



[Go to Product page](#)

1 Image

Overview

Quantity:	100 µg
Target:	LIMS2
Binding Specificity:	Internal Region
Reactivity:	Human
Host:	Goat
Clonality:	Polyclonal
Conjugate:	This LIMS2 antibody is un-conjugated
Application:	ELISA, Immunohistochemistry (IHC)

Product Details

Purpose:	LIMS2
Immunogen:	C-RWSNMSDALA
Sequence:	RWSNMSDALA
Isotype:	IgG
Specificity:	This antibody is expected to recognize isoform 1 (NP_001129509.2) and isoformn 3 (NP_001154875.1).
Cross-Reactivity:	Human
Purification:	Purified from goat serum by ammonium sulphate precipitation followed by antigen affinity chromatography using the immunizing peptide.
Grade:	Verified

Target Details

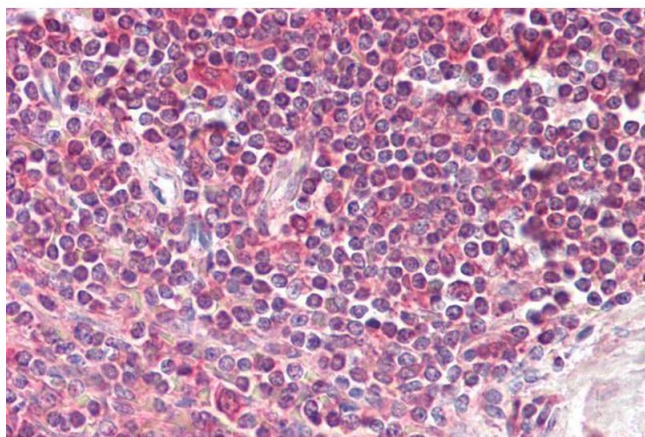
Target:	LIMS2
Alternative Name:	LIMS2 (LIMS2 Products)
Background:	LIMS2, LIM and senescent cell antigen-like domains 2, FLJ10044, PINCH2, ILK-binding protein, OTTHUMP00000203848, OTTHUMP00000203850, OTTHUMP00000203866
Gene ID:	55679
NCBI Accession:	NP_001129509 , NP_001154875
Pathways:	Cell-Cell Junction Organization

Application Details

Application Notes:	Immunohistochemistry: Paraffin embedded Human Spleen. Recommended concentration: 3.75 µg/mL. Western Blot: Preliminary experiments gave an approx 80 kDa band in Human Heart and Mouse Heart lysates after 0.5 µg/mL antibody staining. Please note that currently we cannot find an explanation in the literature for the band we observe given the calcula Peptide ELISA: antibody detection limit dilution 1:8000.
Restrictions:	For Research Use only

Handling

Format:	Liquid
Concentration:	0.5 mg/mL
Buffer:	Supplied at 0.5 mg/mL in Tris saline, 0.02 % sodium azide, pH 7.3 with 0.5 % bovine serum albumin.
Preservative:	Sodium azide
Precaution of Use:	This product contains Sodium azide: a POISONOUS AND HAZARDOUS SUBSTANCE which should be handled by trained staff only.
Handling Advice:	Minimize freezing and thawing.
Storage:	-20 °C
Storage Comment:	Aliquot and store at -20°C, with minimal freeze/thawing. A working aliquot may be refrigerated at 4°C for a few weeks and still remain viable.



Immunohistochemistry

Image 1. ABIN570889 (3.75µg/ml) staining of paraffin embedded Human Spleen. Steamed antigen retrieval with citrate buffer pH 6, AP-staining.