

Datasheet for ABIN7181792  
**anti-MAPK8IP1 antibody (pThr103)**



[Go to Product page](#)

1 Image

## Overview

Quantity:	100 µg
Target:	MAPK8IP1
Binding Specificity:	pThr103
Reactivity:	Human
Host:	Rabbit
Clonality:	Polyclonal
Conjugate:	This MAPK8IP1 antibody is un-conjugated
Application:	Western Blotting (WB), ELISA, Immunofluorescence (IF), Immunohistochemistry (IHC)

## Product Details

Immunogen:	Synthesized peptide derived from Human JIP-1 around the phosphorylation site of T103.
Isotype:	IgG
Cross-Reactivity:	Human, Mouse, Rat
Purification:	The antibody was affinity-purified from rabbit antiserum by affinity-chromatography using epitope-specific immunogen.

## Target Details

Target:	MAPK8IP1
Alternative Name:	MAPK8IP1 ( <a href="#">MAPK8IP1 Products</a> )
Background:	MAPK8IP1 antibody, IB1 antibody, JIP1 antibody, PRKM8IP antibody, C-Jun-amino-terminal

## Target Details

kinase-interacting protein 1 antibody, JIP-1 antibody, JNK-interacting protein 1 antibody, Islet-brain 1 antibody, IB-1 antibody, JNK MAP kinase scaffold protein 1 antibody, Mitogen-activated protein kinase 8-interacting protein 1 antibody

UniProt: [Q9UQF2](#)

## Application Details

Application Notes: WB:1:500-1:2000, IHC:1:100-1:300, IF:1:200-1:1000, ELISA:1:5000,

Restrictions: For Research Use only

## Handling

Format: Liquid

Buffer: Liquid in PBS containing 50 % glycerol, 0.5 % BSA and 0.02 % sodium azide.

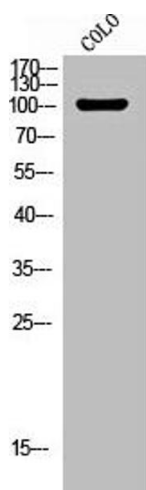
Preservative: Sodium azide

Precaution of Use: This product contains Sodium azide: a POISONOUS AND HAZARDOUS SUBSTANCE which should be handled by trained staff only.

Storage: -20 °C,-80 °C

Storage Comment: Upon receipt, store at -20°C or -80°C. Avoid repeated freeze.

## Images



### Western Blotting

**Image 1.** Western Blot analysis of COLO cells using Phospho-JIP-1 (T103) Polyclonal Antibody