

Datasheet for ABIN7440134  
**anti-ATP1B3 antibody (AA 61-273)**



[Go to Product page](#)

7 Images

## Overview

Quantity:	100 µL
Target:	ATP1B3
Binding Specificity:	AA 61-273
Reactivity:	Human
Host:	Rabbit
Clonality:	Polyclonal
Conjugate:	This ATP1B3 antibody is un-conjugated
Application:	Western Blotting (WB), ELISA, Immunocytochemistry (ICC), Immunohistochemistry (Paraffin-embedded Sections) (IHC (p)), Immunohistochemistry (Frozen Sections) (IHC (fro))

## Product Details

Purpose:	Polyclonal Antibody to Sodium/potassium Transporting ATPase Subunit Beta-3 (ATP1b3)
Immunogen:	Recombinant Sodium/potassium Transporting ATPase Subunit Beta-3 (ATP1b3) corresponding to Met61~Phe273 with N-terminal His Tag
Isotype:	IgG
Specificity:	The antibody is a rabbit polyclonal antibody raised against ATP1b3. It has been selected for its ability to recognize ATP1b3 in immunohistochemical staining and western blotting.
Cross-Reactivity:	Rat
Purification:	Antigen-specific affinity chromatography followed by Protein A affinity chromatography

## Target Details

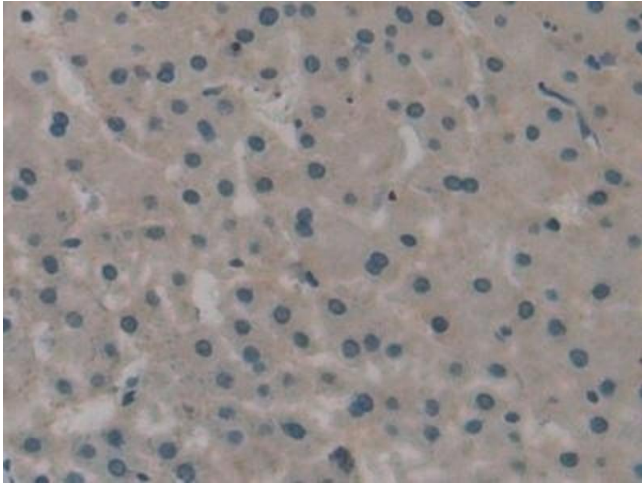
Target:	ATP1B3
Alternative Name:	Sodium/potassium Transporting ATPase Subunit Beta-3 ( <a href="#">ATP1B3 Products</a> )
Background:	CD298, ATP1-B3, ATPB-3, ATPase, Na <sup>+</sup> /K <sup>+</sup> Transporting Beta 3 Polypeptide
Pathways:	<a href="#">Thyroid Hormone Synthesis</a>

## Application Details

Application Notes:	Western blotting: 0.5-5 µg/mL Immunohistochemistry: 5-50 µg/mL Immunocytochemistry: 5-50 µg/mL Optimal working dilutions must be determined by end user.
Comment:	The thermal stability is described by the loss rate. The loss rate was determined by accelerated thermal degradation test, that is, incubate the protein at 37°C for 48h, and no obvious degradation and precipitation were observed. The loss rate is less than 5% within the expiration date under appropriate storage condition.
Restrictions:	For Research Use only

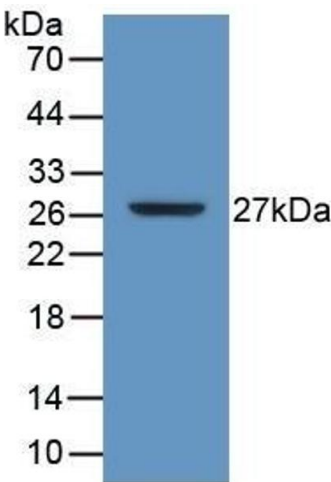
## Handling

Format:	Liquid
Buffer:	0.01M PBS, pH 7.4, containing 0.05 % Proclin-300, 50 % glycerol.
Preservative:	ProClin
Precaution of Use:	This product contains ProClin: a POISONOUS AND HAZARDOUS SUBSTANCE which should be handled by trained staff only.
Storage:	4 °C,-20 °C
Storage Comment:	Store at 4°C for frequent use. Stored at -20°C in a manual defrost freezer for two year without detectable loss of activity. Avoid repeated freeze-thaw cycles.
Expiry Date:	24 months



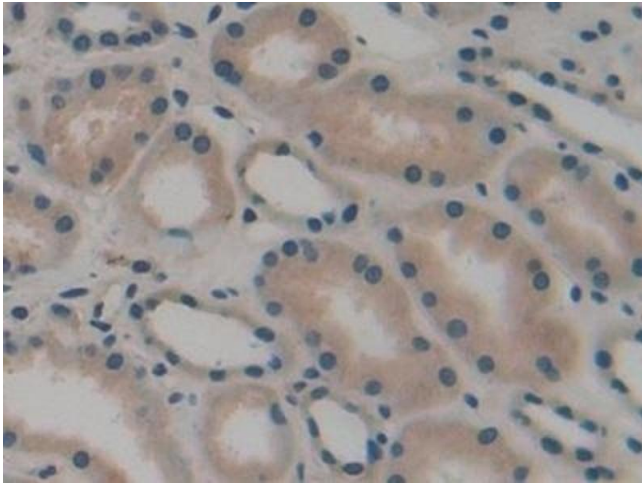
**Immunohistochemistry**

**Image 1.** Detection of ATP1b3 in Human Liver cancer Tissue using Polyclonal Antibody to Sodium/potassium Transporting ATPase Subunit Beta-3 (ATP1b3)



**Western Blotting**

**Image 2.** Detection of Recombinant ATP1b3, Human using Polyclonal Antibody to Sodium/potassium Transporting ATPase Subunit Beta-3 (ATP1b3)



**Immunohistochemistry**

**Image 3.** Detection of ATP1b3 in Human Kidney Tissue using Polyclonal Antibody to Sodium/potassium Transporting ATPase Subunit Beta-3 (ATP1b3)

Please check the [product details page](#) for more images. Overall 7 images are available for ABIN7440134.