

Datasheet for ABIN7552402  
**ATL2 Protein (AA 1-583) (His tag)**



[Go to Product page](#)

3 Images

## Overview

Quantity:	1 mg
Target:	ATL2
Protein Characteristics:	AA 1-583
Origin:	Human
Source:	HEK-293 Cells
Protein Type:	Recombinant
Purification tag / Conjugate:	This ATL2 protein is labelled with His tag.

## Product Details

Purpose:	Made-to-order recombinant ATL2 Protein expressed in mammalian cells.
Sequence:	<p>MAEGDEAARG QQPHQGLWRR RRTSDPSAAV NHVSSTTSLG ENYEDDDLVN SDEVMKKPCP</p> <p>VQIVLAHEDD HNFELDEEAL EQILLQEHIR DLNIVVVSVA GAFRKGKSFL LDFMLRYMYN</p> <p>KDSQSWIGGN NEPLTGFTWR GGCERETGTI QVWNEVFVID RPNGTKVAVL LMDTQGAFDS</p> <p>QSTIKDCATV FALSTMTSSV QVYNLSQNIQ EDDLQHLQLF TEYGRAMEE IYQKPFQTLN</p> <p>FLIRDWSYPY EHSYGLEGGK QFLEKRLQVK QNQHEELQNV RKHIHNCFSN LGCFLPHPG</p> <p>LKVATNPSFD GRLKDIDEDF KRELRLNLVPL LLAPENLVEK EISGSKVTCT DLVEYFKAYI</p> <p>KIYQGEELPH PKSMLQATAE ANNLAAVAGA RDTYCKSMEQ VCGGDKPYIA PSDLERKHLN</p> <p>LKEVAIKQFR SVKKMGGDEF CRRYQDQLEA EIEETYANFI KHNDGKNIFY AARTPATLFA</p> <p>VMFAMYIISG LTGFIGNSI AVLCLNLMGL ALIFLCTWAY VKYSGEFREI GTVIDQIAET</p> <p>LWEQVLKPLG DNLMEENIRQ SVTNSIKAGL TDQVSHHARL KTD <b>Sequence without tag. The proposed Purification-Tag is based on experiences with the expression system, a different complexity of the protein could make another tag necessary. In case you have a special</b></p>

---

### request, please contact us.

---

**Specificity:** If you are looking for a specific domain and are interested in a partial protein or a different isoform, please contact us regarding an individual offer.

**Characteristics:** **Key Benefits:**

- Made to order protein - from design to production - by highly experienced protein experts.
- Protein expressed in mammalian cells and purified in one-step affinity chromatography
- The optimized expression system ensures reliability for intracellular, secreted and transmembrane proteins.
- State-of-the-art algorithm used for plasmid design (Gene synthesis).

This protein is a made-to-order protein and will be made for the first time for your order. Our experts in the lab try to ensure that you receive soluble protein.

If you are not interested in a full length protein, please contact us for individual protein fragments.

The big advantage of ordering our made-to-order proteins in comparison to ordering custom made proteins from other companies is that there is no financial obligation in case the protein cannot be expressed or purified.

---

**Purity:** > 90 % as determined by Bis-Tris PAGE, anti-tag ELISA, Western Blot and analytical SEC (HPLC)

**Grade:** custom-made

## Target Details

---

**Target:** ATL2

**Alternative Name:** ATL2 ([ATL2 Products](#))

**Background:** Atlastin-2 (EC 3.6.5.-) (ADP-ribosylation factor-like protein 6-interacting protein 2) (ARL-6-interacting protein 2) (Aip-2),FUNCTION: GTPase tethering membranes through formation of trans-homooligomers and mediating homotypic fusion of endoplasmic reticulum membranes. Functions in endoplasmic reticulum tubular network biogenesis (PubMed:18270207, PubMed:19665976, PubMed:27619977). {ECO:0000269|PubMed:18270207, ECO:0000269|PubMed:19665976, ECO:0000269|PubMed:27619977}.

**Molecular Weight:** 66.2 kDa

**UniProt:** [Q8NHH9](#)

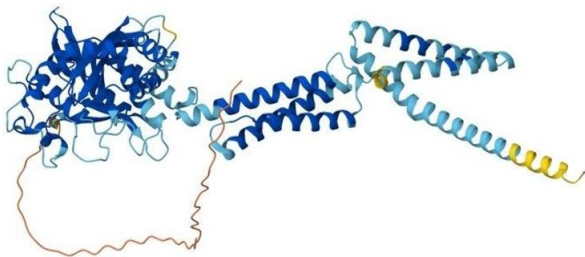
Application Details

Application Notes:	We expect the protein to work for functional studies. As the protein has not been tested for functional studies yet we cannot offer a guarantee though.
Restrictions:	For Research Use only

Handling

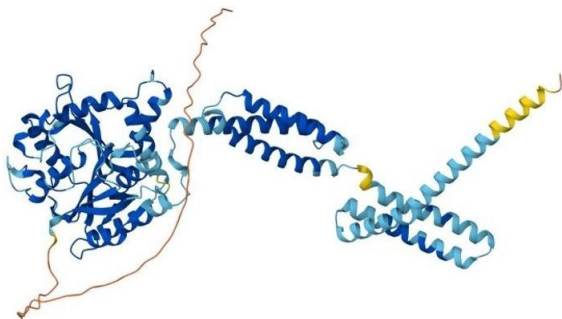
Format:	Liquid
Buffer:	The buffer composition is at the discretion of the manufacturer.
Handling Advice:	Avoid repeated freeze-thaw cycles.
Storage:	-80 °C
Storage Comment:	Store at -80°C.
Expiry Date:	12 months

Images



**Protein Structure**

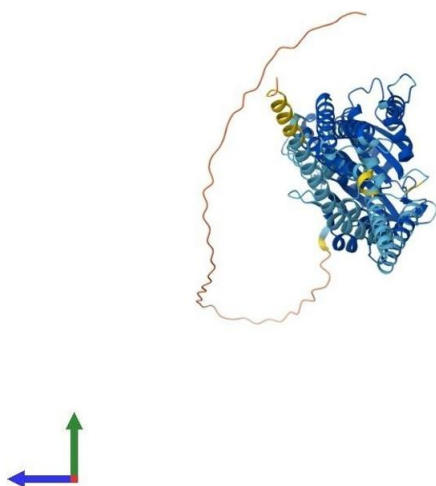
**Image 1.** AlphaFold protein structure prediction of Human Recombinant ATL2 Protein, UniprotID Q8NHH9



**Protein Structure**

**Image 2.** AlphaFold protein structure prediction of Human Recombinant ATL2 Protein, UniprotID Q8NHH9





#### Protein Structure

**Image 3.** AlphaFold protein structure prediction of Human Recombinant ATL2 Protein, UniprotID Q8NHH9